

Care4Suffolk is collecting signatures from fellow Suffolk citizens to oppose the 2045 Comprehensive Plan. We are including this information packet for you to share information about the problems with the new comprehensive plan. We have more information available on our website: care4suffolk.org. **This issue appears before City Council on August 21, so please return promptly.**

We urge City Council to vote NO on the 2045 Comprehensive Plan.

The draft 2045 Comprehensive Plan:

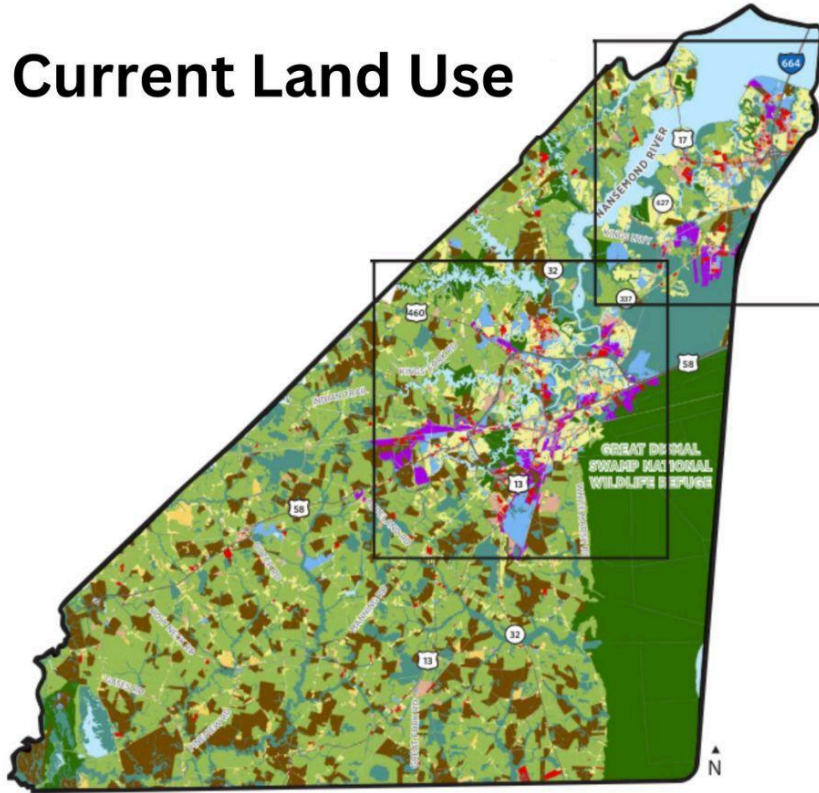
- **Ignores citizen input**
 - Received 7,500 public response
 - The citizens requested: maintain small town feel; downtown investment; fix traffic issues; safe, walkable communities; more amenities; affordable housing, limit warehouses; preserve agriculture; and engage public about their wants and needs
- Instead the plan focuses on serving the Regional needs of the Port of Virginia and **emphasizes building warehouses and suburban sprawl.**
- **Contains huge increases to Suffolk's Growth Areas** - 2.5 times the previous addition in the last comp plan.
- Will **drastically change land use and facilitate rezoning for developers.** This new plan states that the City wants the zoning to match the new Land Use Map. (See maps)
- **Does not include a Fiscal Impact Analysis** to evaluate the future tax burden of these changes. Despite the recommendation of experts, and despite the drastic changes in Land Use and Growth Areas, the City decided to postpone the Fiscal Impact Analysis until AFTER the plan is adopted.
- **Does not protect our drinking water, watersheds or prime farmland.**
 - At the same time the plan talks about preserving open spaces, it extends development in these areas.
 - It promotes large-scale development in the watershed of the Chesapeake Bay and our drinking water reservoirs.

The State of Virginia only requires that the current comprehensive plan be reviewed. The City has done that. We don't need or want the 2045 Comprehensive Plan.

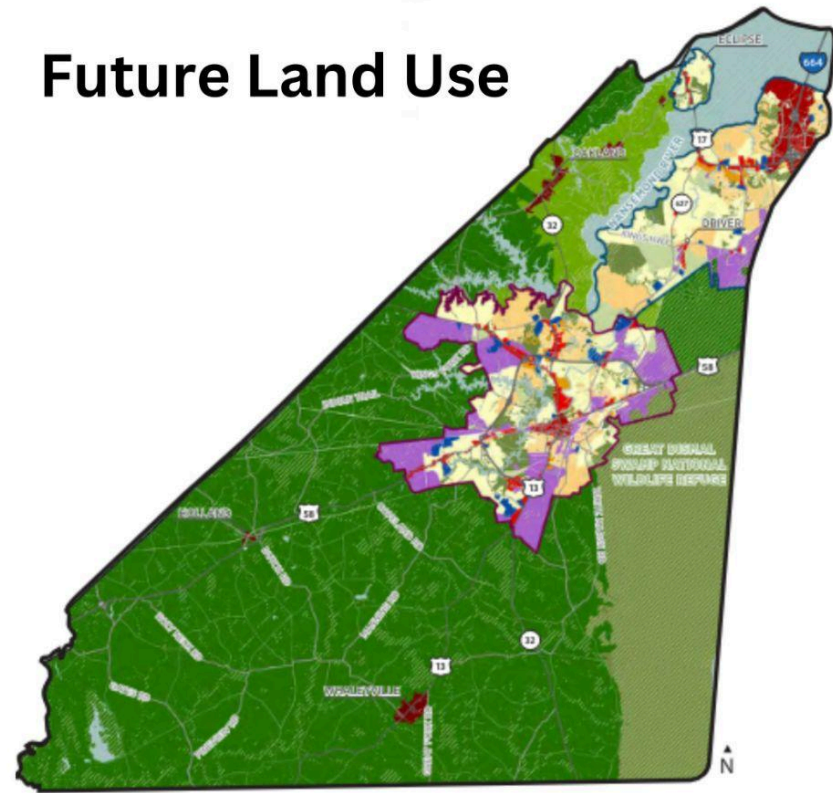
Please email care4suffolk@gmail.com to return the petition. Thank you for your support!

The 2045 Comprehensive Plan will drastically change the Land Use in Suffolk.

Current Land Use



Future Land Use



Land Use Types

- | | |
|--|--|
| ■ Mixed Use Core | ■ Traditional Neighborhood |
| ■ Village | ■ Suburban Neighborhood |
| ■ Commercial | ■ Rural Neighborhood |
| ■ Employment Center | ■ Rural Conservation |
| ■ Office/Institutional | ■ Rural Agriculture |
| ■ Multifamily Neighborhood | ■ Parks and Open Space |

Residential max densities have increased with the 2045 Comp Plan.
 Employment Centers (purple) are where warehouses can be built.
 Suburban Neighborhoods (yellow) have a max density of 4 units/acre.
 Traditional Neighborhoods (light orange) have a max density of 10 units/acre.
 Mix Use (red) has a max density of 16+ units/acre

Tell Suffolk City Council to Vote "NO" to the 2045 Comprehensive Plan

We urge City Council to vote NO on the 2045 Comprehensive Plan. The 2045 Comprehensive Plan: ignores citizen input; emphasizes building warehouses and suburban sprawl; contains huge increases to Suffolk's Growth Areas; will drastically change land use and facilitate rezoning for developers; does not include a Fiscal Impact Analysis to evaluate the future tax burden of these change; and does not protect our drinking water, watersheds or prime farmland.

No.	Name	Address	E-mail	Signature
1				
2				
3				
4				
5				
6				
7				
8				
9				
10				
11				
12				
13				
14				
15				

Tell Suffolk City Council to Vote "NO" to the 2045 Comprehensive Plan

We urge City Council to vote NO on the 2045 Comprehensive Plan. The 2045 Comprehensive Plan: ignores citizen input; emphasizes building warehouses and suburban sprawl; contains huge increases to Suffolk's Growth Areas; will drastically change land use and facilitate rezoning for developers; does not include a Fiscal Impact Analysis to evaluate the future tax burden of these change; and does not protect our drinking water, watersheds or prime farmland.

No.	Name	Address	E-mail	Signature
16				
17				
18				
19				
20				
21				
22				
23				
24				
25				
26				
27				
28				
29				
30				